



Department of Public Works  
**Engineering Division**  
Robert F. Phillips, P.E., City Engineer  
City-County Building, Room 115  
210 Martin Luther King, Jr. Boulevard  
Madison, Wisconsin 53703  
Phone: (608) 266-4751  
Fax: (608) 264-9275  
[engineering@cityofmadison.com](mailto:engineering@cityofmadison.com)  
[www.cityofmadison.com/engineering](http://www.cityofmadison.com/engineering)

**Deputy City Engineer**  
Gregory T. Fries, P.E.  
**Deputy Division Manager**  
Kathleen M. Cryan  
**Principal Engineer 2**  
Christopher J. Petykowski, P.E.  
John S. Fahrney, P.E.  
**Principal Engineer 1**  
Christina M. Bachmann, P.E.  
Mark D. Moder, P.E.  
Janet Schmidt, P.E.  
James M. Wolfe, P.E.  
**Facilities & Sustainability**  
Bryan Cooper, Principal Architect  
**Mapping Section Manager**  
Eric T. Pederson, P.S.  
**Financial Manager**  
Steven B. Danner-Rivers

March 3, 2020

**NOTICE OF ADDENDUM  
ADDENDUM 1  
CONTRACT NO. 8501, PROJECT NO. 11188  
GREGORY STREET, CROSS STREET, COPELAND STREET, AND WESTERN AVENUE  
RECONSTRUCTION ASSESSEMENT DISTRICT - 2020**

Revise and amend the contract document(s) for the above project as stated in this addendum, otherwise, the original document shall remain in effect.

**PLANS:**

**REMOVE**

Remove Sheets P-8, U-6, U-7, U-8, U-9, U-10, and W-1

**INSERT**

Insert Sheets P-8, U-6, U-7, U-8, U-9, U-10, and W-1 (Revised 3-2-2019)

Sheet P-8 is being revised to include a note for removal and reinstallation of the existing ornamental metal fence at 3201 Cross Street. Sheets U-6 and U-8 are being revised to delete the proposed sanitary sewer lateral at 702 Western Avenue that is connected to the proposed sewer main at Western Avenue and add a private storm sewer lateral for 3201 Cross Street. Sheet U-8 is being revised to show two proposed sanitary sewer cleanout structures in front of 726 Western Avenue, add a proposed sanitary sewer lateral at 730 Western Avenue and add a private storm sewer lateral for 739 Western Avenue. Sheet U-9 is being revised to reflect revisions made on sheet U-7. Sheet U-10 is being revised to show new castings for structures S-13, S-15, and S-16. Sheet W-1 is being revised to reflect revisions made on sheet U-6.

**SPECIAL PROVISIONS:**

**REVISE**

**BID ITEM 21110      TERRACE RAIN GARDEN**

Insert description after first and only paragraph.

Terrace Rain Gardens shall be inspected by Phil Gaebler (608-266-4059) or Carissa Wegner (608-261-9822) of City Engineering. The Contractor shall notify Phil or Carissa before Engineered Soil is placed in each Terrace Rain Garden and after the Terrace Rain Garden is constructed for payment authorization.

**ADD**

**BID ITEM 90003 – REMOVE AND REINSTALL ORNAMENTAL METAL FENCE**

**DESCRIPTION**

Work includes all labor, materials and equipment necessary to remove and reinstall the ornamental metal fence identified on the construction plans. New concrete footings and miscellaneous related items shall be incidental to this item. Any damages to the ornamental metal fence or its parts, while it is being removed or reinstalled, shall be the Contractors responsibility to replace at no extra cost to the City. The ornamental metal fence shall be reinstalled as described in Sheet 4.3 of the 2018 Parks Playground Replacements- Group1, Contract Number 8154. Plans for Contract Number 8154 can be found at the following link:

<https://www.cityofmadison.com/business/PW/contracts/docAndSpecs.cfm?ContractNumber=8154>

**METHOD OF MEASUREMENT**

Remove and Reinstall Ornamental Metal Fence shall be measured by the linear foot acceptably completed.

**BASIS OF PAYMENT**

This item, measured as provided above, shall be paid for at the contract unit price for all work, materials, equipment, and incidentals necessary to complete the work as set forth in the description.

**PROPOSAL:**

A summary of the changes to the proposal is as follows:

ACTION	BID ITEM	DESCRIPTION	MEASUREMENT UNITS
ADD	90003	REMOVE AND REINSTALL ORNAMENTAL METAL FENCE	L.F.
ADD	50441	8 INCH TYPE III STORM SEWER PIPE	L.F.
ADD	50780	CLEANOUT	EACH

Please see Bid Express for revised bid item quantities.

Please acknowledge this addendum on page E1 of the contract documents and/or in Section E: Bidder's Acknowledgement on Bid Express.

Electronic version of these documents can be found on the Bid Express web site at:

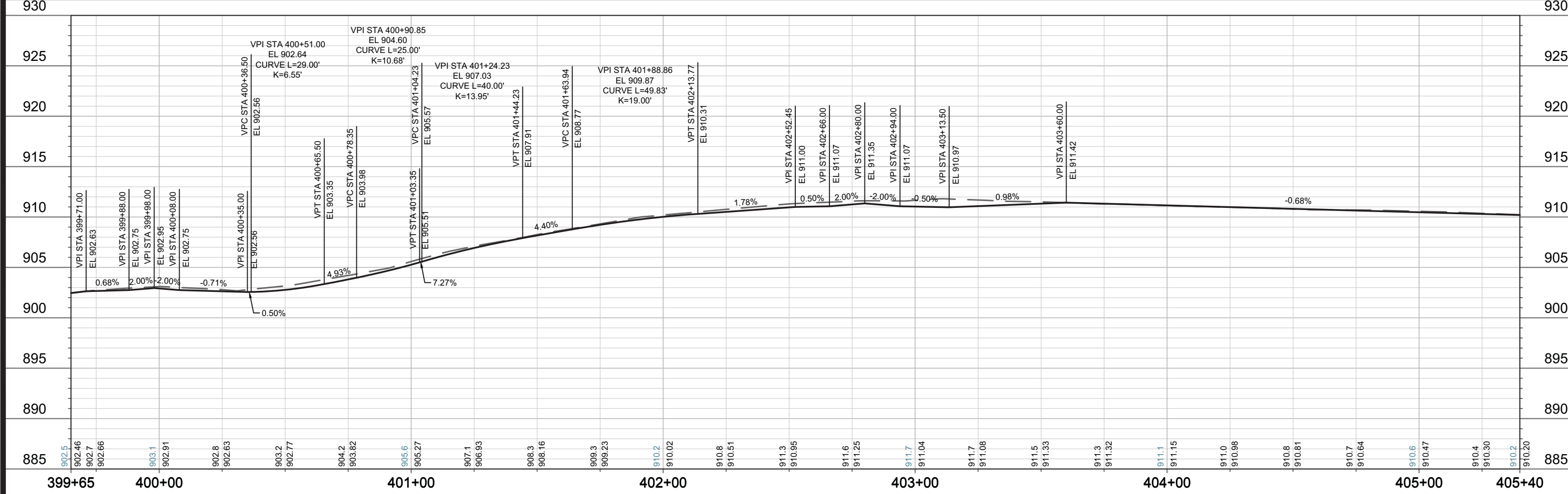
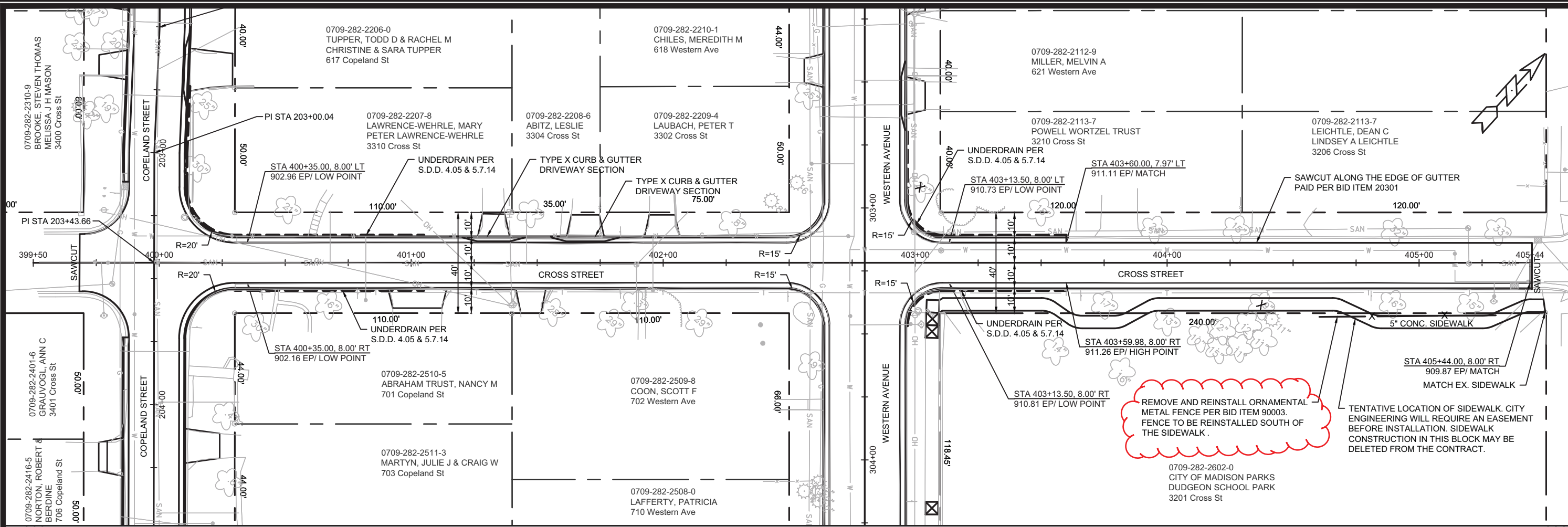
<http://www.bidexpress.com>

If you are unable to download plan revisions associated with the addendum, please contact the Engineering office at 608-266-4751 receive the material by another route.

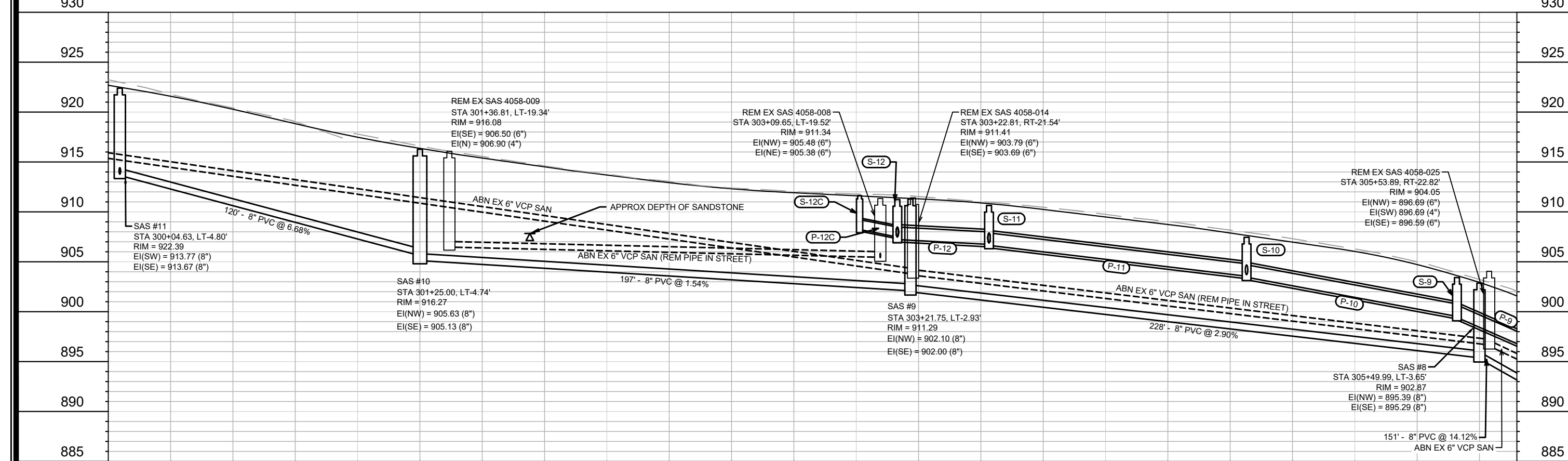
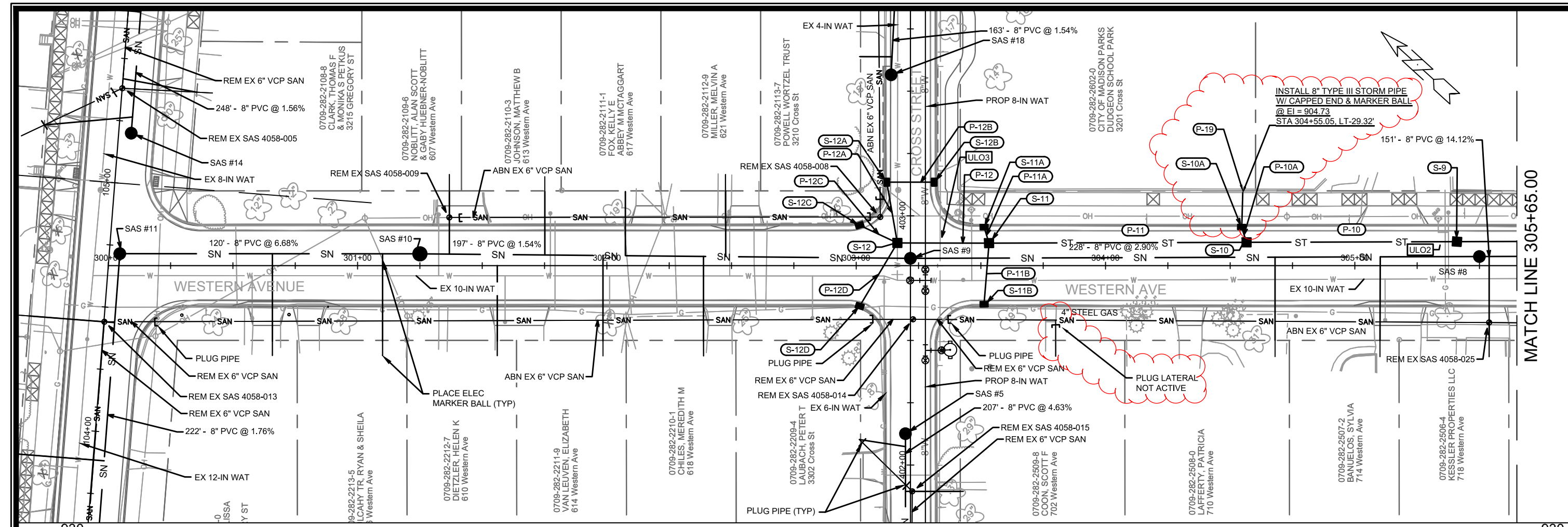
Sincerely,



Robert F. Phillips, P.E., City Engineer



MARK	REVISION	DATE	BY
11188	ADDED BID ITEM 90003 NOTE - FEBG	2/29/2021	
Designed By: FEBG Date: 2/29/2020 10:23 AM			Scale: 1 IN=40 FT
11188		P-8	
11188		CONTRACT NO: 8501	
<p>PLAN &amp; PROFILE - CROSS STREET</p> <p>GREGORY ST, CROSS ST, COPELAND ST, &amp; WESTERN AVE RECON.</p> <p>M:\DESIGN\Projects\11188\11188 Civil 3D\CAD\Plan Sheets\11188_P_Sheets.dwg</p>			
11188		P-8	




MATCH LINE 305+65.00

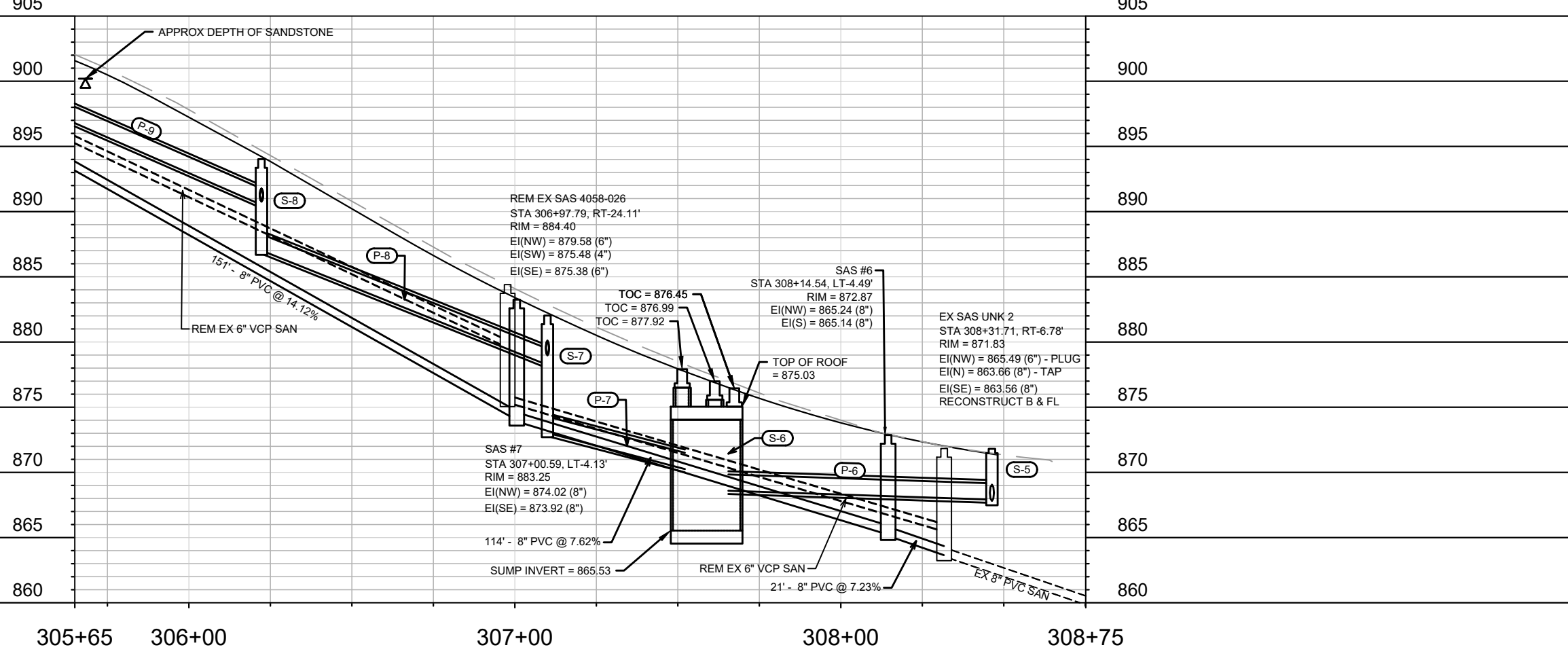
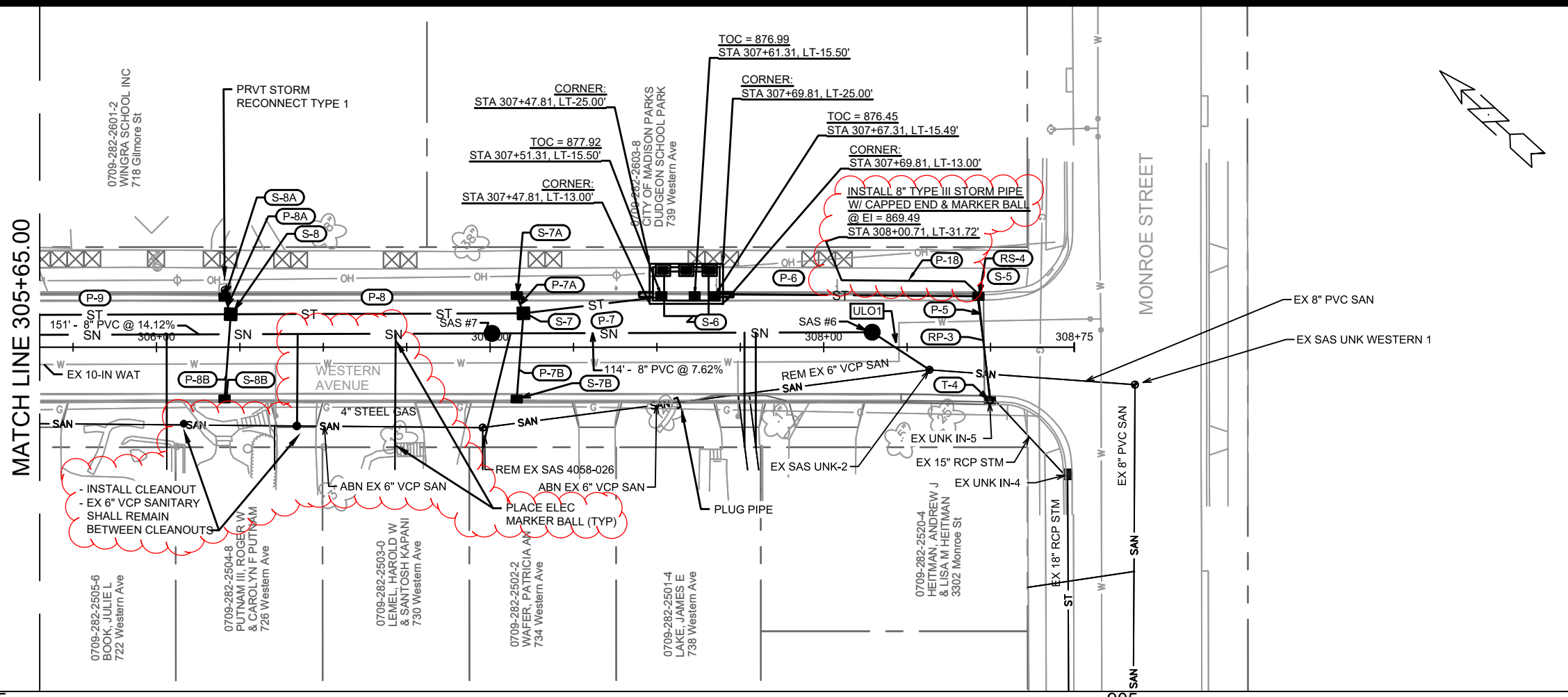
MARK	REVISION	DATE	BY
	STORM & SANITARY SEWER REVISION 1	3/2/2020	DAO
Designed By: DAO	Date: 3/2/2020 2:19 PM	Scale: 1" = 40'	U-6
11188			

11188  
 MADISON, WI  
 GREGORY ST, CROSS ST, COPELAND ST, & WESTERN AVE RECON.  
 CONTRACT NO.: 8501

UTILITIES PLAN & PROFILE - WESTERN AVE  
 GREGORY ST, CROSS ST, COPELAND ST, & WESTERN AVE RECON.  
 M:\DESIGN\Projects\11188\11188 Civil 3D\CAD\Sewers\11188SEWERS-Layouts\_dwg

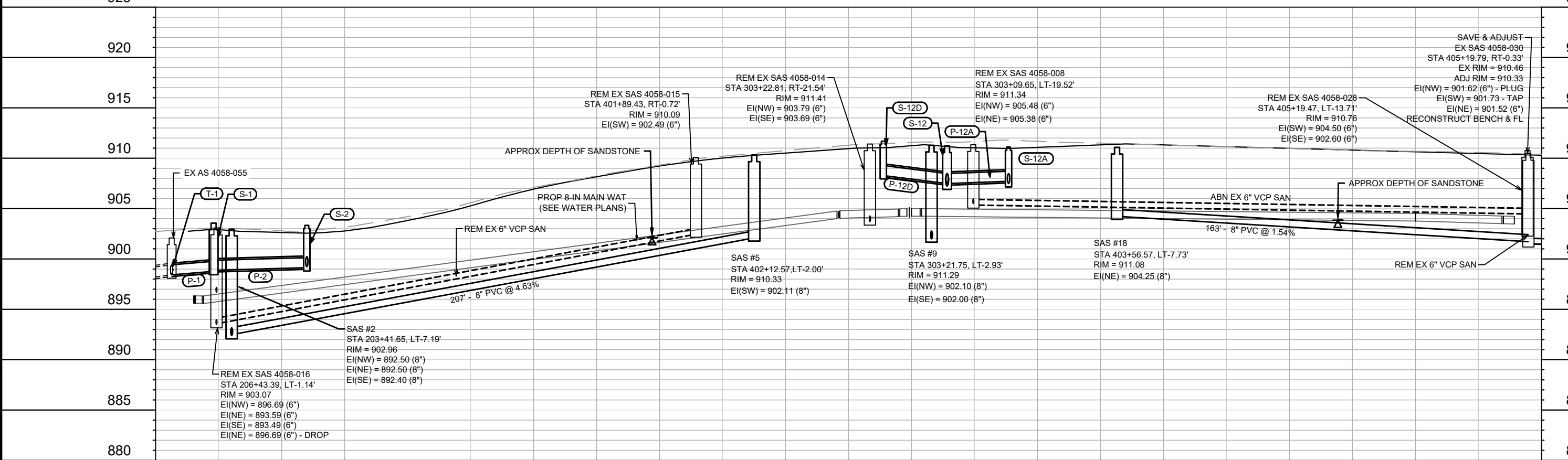
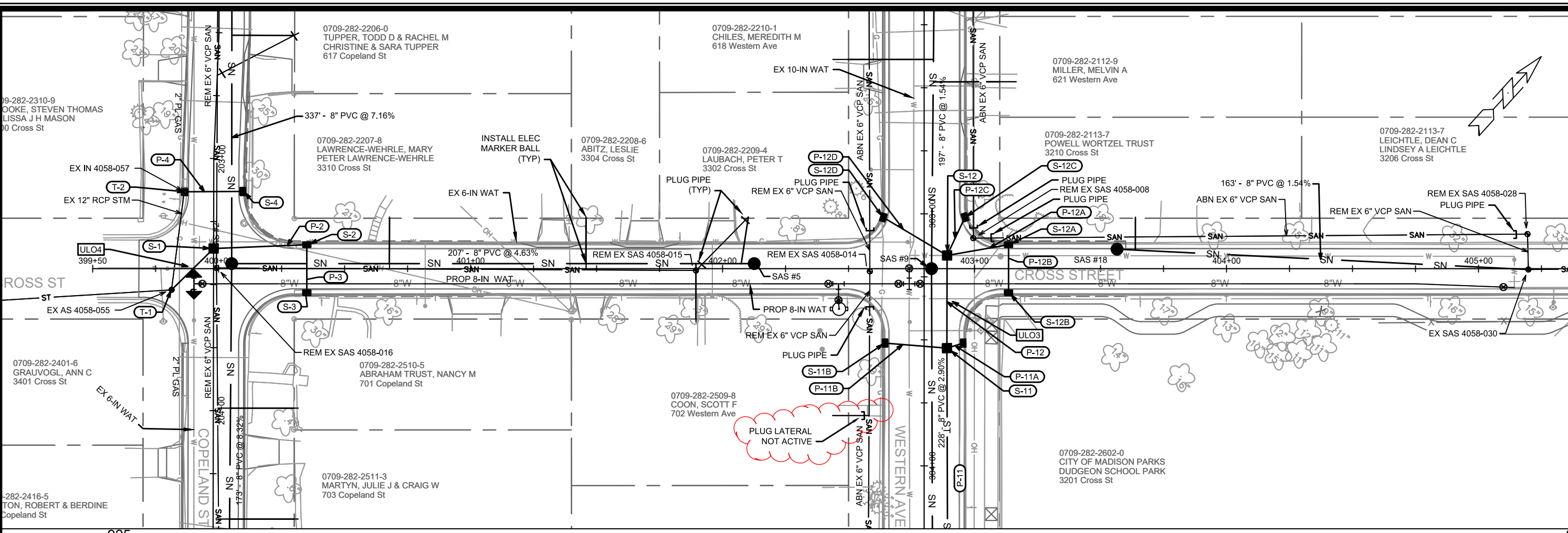


11188  
 U-6



REVISION	DATE	BY
STORM & SANITARY SEWER REVISION 1	3/2/2020	DAO
MARK		
DESIGNED BY: DAO	DATE: 3/2/2020 2:20 PM	SCALE: 1" = 40'
11188		U-7

11188  
 MADISON, WI  
 CONTRACT NO: 8501



11188

UTILITIES PLAN & PROFILE - CROSS ST

GREGORY ST, CROSS ST, COPELAND ST, & WESTERN AVE RECON.

MADISON, WI

CONTRACT NO: 8501

U-8

11188

U-8

3/2/2020

DAO

REVISION

DATE

BY

STORM & SANITARY SEWER REVISION 1

11188

U-8

Scale: 1" = 40'

Designed By: DAO Date: 3/2/2020 2:35 PM

M:\DESIGN\Projects\11188\Civil\3DCAD\Sewers\11188SEWERS-Layouts.dwg

CITY OF MADISON WISCONSIN

# SANITARY SEWER SCHEDULE

\* REV 3/2/2020 DAO

GREGORY ST, CROSS ST, COPELAND ST & WESTERN AVE RECON	SHEET NO.
PROJECT NO. 11188	U-9
SANITARY SEWER SCHEDULE	
CITY OF MADISON	

U-9

## PROPOSED SANITARY STRUCTURES

SAS NO.	STATION	LOCATION (OFFSET)	TOP OF CASTING	E.I.	DEPTH	NOTES
<b>COPELAND ST</b>						
SAS #1	205+14.63	LT-6.07	890.25	877.90	12.35	
SAS #2	203+41.65	LT-7.19	902.96	892.40	10.56	
SAS #3	200+05.03	LT-4.81	926.68	916.61	10.07	
<b>WESTERN AVE</b>						
SAS #6	308+14.54	LT-4.49	872.87	865.14	7.73	
SAS #7	307+00.59	LT-4.13	883.25	873.92	9.33	
SAS #8	305+49.99	LT-3.65	902.87	895.29	7.58	
SAS #9	303+21.75	LT-2.93	911.29	902.00	9.29	
SAS #10	301+25.00	LT-4.74	916.27	905.13	11.14	
SAS #11	300+04.63	LT-4.80	922.39	913.67	8.72	
<b>GREGORY ST</b>						
SAS #4	100+24.80	RT-5.33	927.27	918.50	8.77	
SAS #12	102+50.01	LT-4.80	925.95	917.67	8.28	
SAS #13	107+68.38	RT-5.04	917.41	909.92	7.49	
SAS #14	105+20.35	RT-5.04	921.22	913.90	7.32	
SAS #15	113+73.13	RT-5.44	891.17	883.02	8.15	
SAS #16	110+69.44	RT-5.41	904.41	897.67	6.74	
SAS #17	108+25.48	RT-5.37	915.62	908.67	6.95	
<b>CROSS ST</b>						
SAS #5	402+12.57	LT-2.00	910.33	902.11	8.22	
SAS #18	403+56.67	LT-7.73	911.08	904.25	6.83	(1)

## SANITARY STRUCTURE REMOVALS

STRUCTURE ID NO.	STATION	LOCATION (OFFSET)	TOP OF CASTING	E.I.	DEPTH	NOTES
<b>COPELAND ST</b>						
SAS 4058-024	205+68.52	LT-2.81	886.99	875.65	11.34	
SAS 4058-016	203+43.39	LT-1.14	903.07	893.49	9.58	
<b>WESTERN AVE</b>						
SAS 4058-026	306+97.79	RT-24.11	884.40	875.38	9.02	
SAS 4058-025	305+53.89	RT-22.82	904.05	896.59	7.46	
SAS 4058-014	303+22.81	RT-21.54	911.41	903.69	7.72	
SAS 4058-008	303+09.65	LT-19.52	911.34	905.38	5.96	
SAS 4058-009	301+36.81	LT-19.34	916.08	906.40	9.68	
<b>GREGORY ST</b>						
SAS 4058-011	101+86.56	LT-0.03	927.96	913.67	14.29	
SAS 4058-010	99+61.99	RT-1.52	927.44	920.14	7.30	
SAS 4058-013	104+44.06	RT-0.19	923.63	915.55	8.08	
SAS 4058-012	102+77.87	RT-0.35	926.55	918.51	8.04	
SAS 4057-006	107+68.47	LT-0.32	917.76	910.08	7.68	
SAS 4058-005	105+38.04	RT-0.07	921.72	915.12	6.60	
SAS 4157-031	113+72.87	RT-1.54	891.40	883.24	8.16	
SAS 4057-002	110+68.99	RT-0.56	905.36	899.12	6.24	
SAS 4057-001	108+38.95	LT-0.09	915.46	909.38	6.08	
<b>CROSS ST</b>						
SAS 4058-015	401+89.43	RT-0.72	910.09	902.49	7.60	
SAS 4058-028	405+19.47	LT-13.71	910.76	902.60	8.16	

## SPECIFIC NOTES

- (1) INSTALL OFFSET CONE W/ CASTING PLACED ON THE SW SIDE (OUTSIDE EDGE OF GUTTER)
- (2) PIPE PLUGS INCIDENTAL (LESS THAN 10")
- \* (3) INSTALL 2 (TWO) CLEANOUTS @ 726 WESTERN AVE (SEE U-7)

## PROPOSED SANITARY PIPES

FROM (DNSTM)	TO (UPSTM)	DWNSTRM E.I.	UPSTRM E.I.	PLAN LGTH (FT)	PAY SLOPE (%)	PIPE SIZE	PVC TYPE	NOTES
<b>COPELAND ST</b>								
UNK-1	SAS #1	859.60	877.90	353	5.18%	8"	SDR-35	
SAS #1	SAS #2	878.00	892.40	173	8.32%	8"	SDR-35	
SAS #2	SAS #3	892.50	916.61	337	7.16%	8"	SDR-35	
<b>WESTERN AVE</b>								
UNK-2	SAS #6	863.66	865.14	21	7.23%	8"	SDR-35	
SAS #6	SAS #7	865.24	873.92	114	7.62%	8"	SDR-35	
SAS #7	SAS #8	874.02	895.29	151	14.12%	8"	SDR-35	
SAS #8	SAS #9	895.39	902.00	228	2.90%	8"	SDR-35	
SAS #9	SAS #10	902.10	905.13	197	1.54%	8"	SDR-35	
SAS #10	SAS #11	905.63	913.67	120	6.68%	8"	SDR-35	
<b>GREGORY ST</b>								
SAS #3	SAS #4	916.71	918.50	167	1.07%	8"	SDR-35	
SAS #11	SAS #12	913.77	917.67	222	1.76%	8"	SDR-35	
SAS #13	SAS #14	910.02	913.90	248	1.56%	8"	SDR-35	
SAS #15	SAS #16	883.12	897.67	304	4.79%	8"	SDR-35	
SAS #16	SAS #17	897.77	908.67	244	4.47%	8"	SDR-35	
<b>CROSS ST</b>								
SAS #2	SAS #5	892.50	902.11	207	4.63%	8"	SDR-35	
SAS 4058-030	SAS #18	901.73	904.25	163	1.54%	8"	SDR-35	

## SANITARY PIPE REMOVALS

REMOVE FROM (DSTM)	REMOVE TO (UPSTM)	LGTH (FT)	PAY AMOUNT	PIPE TYPE	PIPE SIZE	PAID (Y/N)	NOTES
<b>COPELAND ST</b>							
UNK COPELAND 2	SAS 4058-024	299	0	VCP	6"	N	
SAS 4058-024	SAS 4058-016	225	170	VCP	6"	Y	
SAS 4058-016	SAS 4058-015	190	0	VCP	6"	N	
<b>WESTERN AVE</b>							
UNK WESTERN 2	SAS 4058-026	135	75	VCP	6"	Y	REM PIPE LOC IN STREET; ABN W/PLUGS (2)
* SAS 4058-026	SAS 4058-025	144	0	VCP	6"	N	ABN W/PLUGS (2) (3)
SAS 4058-025	SAS 4058-014	231	13	VCP	6"	Y	REM PIPE LOC IN STREET; ABN W/PLUGS (2)
SAS 4058-014	SAS 4058-013	324	38	VCP	6"	Y	REM PIPE LOC IN STREET; ABN W/PLUGS (2)
SAS 4058-008	SAS 4058-009	173	0	VCP	6"	N	ABN W/PLUGS (2)
<b>GREGORY ST</b>							
SAS 4058-016	SAS 4058-011	343	343	VCP	6"	Y	
SAS 4058-011	SAS 4058-010	225	225	VCP	6"	Y	
SAS 4058-013	SAS 4058-012	166	166	VCP	6"	Y	
SAS 4057-006	SAS 4057-005	231	231	VCP	6"	Y	
SAS 4157-031	SAS 4057-002	304	304	VCP	6"	Y	
SAS 4057-002	SAS 4057-001	230	230	VCP	6"	Y	
<b>CROSS ST</b>							
SAS 4058-030	SAS 4058-028	14	14	VCP	6"	Y	
SAS 4058-028	SAS 4058-008	220	0	VCP	6"	N	ABN W/PLUGS (2)

# STORM SEWER SCHEDULE

\* REV 3/2/2020 DAO

REGORY ST, CROSS ST, COPELAND ST & WESTERN AVE RECO	SHEET NO.
PROJECT NO. 11188	U-10
STORM SEWER SCHEDULE	
CITY OF MADISON	

U-10

## PROPOSED STORM STRUCTURES

STRUC. NO.	STATION	LOCATION (OFFSET)	TYPE	TOP OF CASTING	E.I.	DEPTH	NOTES
<b>COPELAND ST</b>							
T-1	203+52.05	RT-16.62	TAP	-	898.42	-	EX AS 4058-055
S-1	203+35.66	CL	3X3 SAS	903.56	898.77	4.79	W/1550-0054
S-2	203+34.10	LT-36.98	H INLET	903.34	899.13	4.21	LP; W/3067-7004-VB
S-3	203+53.10	LT-37.02	H INLET	902.54	899.34	3.20	LP; W/3067-7004-VB
T-2	203+13.17	RT-11.24	TAP	-	902.03	-	EX IN 4058-057
S-4	203+13.01	LT-11.50	H INLET	905.42	902.39	3.03	W/3067-7004-V
<b>WESTERN AVE</b>							
T-4	308+49.84	RT-15.89	TAP	-	867.40	-	EX UNK IN-5
S-5	308+46.36	LT-15.24	3X3 SAS	871.81	867.81	4.00	W/3067-7004-V
S-6	307+58.84	LT-16.00	SCREEN TRT DEV TYPE B	876.71	865.53	11.18	(1)
S-7	307+10.00	LT-10.16	3X3 SAS	882.03	873.03	9.00	W/1550-0054
S-7A	307+08.00	LT-15.50	H INLET	882.56	879.16	3.40	W/3067-7004-V
S-7B	307+08.00	RT-15.50	H INLET	882.56	879.16	3.40	W/3067-7004-V
S-8	306+22.27	LT-9.88	3X3 SAS	894.02	887.02	7.00	W/1550-0054
S-8A	306+20.43	LT-15.05	H INLET	894.59	891.19	3.40	W/3067-7004-V
S-8B	306+20.41'	RT-15.50	H INLET	894.57	891.17	3.40	W/3067-7004-V
S-9	305+40.97	LT-9.62	3X3 SAS	903.42	899.42	4.00	W/1550-0054
S-10	304+56.58	LT-9.36	3X3 SAS	907.45	903.45	4.00	W/1550-0054
S-10A	304+54.58	LT-15.50	H INLET	909.14	904.14	5.00	W/3067-7004-V
S-11	303+53.28	LT-9.03	3X3 SAS	910.64	906.64	4.00	W/1550-0054
S-11A	303+51.29	LT-15.50	H INLET	910.97	907.57	3.40	W/3067-7004-V
S-11B	303+51.28	RT-15.50	H INLET	910.97	907.57	3.40	W/3067-7004-V
S-12	303+16.52	LT-9.11	3X3 SAS	911.23	907.23	4.00	W/1550-0054
S-12A	303+12.25	LT-33.50	H INLET	911.11	907.71	3.40	LP; W/3067-7004-VB
S-12B	303+31.25	LT-33.50	H INLET	911.19	907.99	3.20	LP; W/3067-7004-VB
S-12C	303+01.35	LT-16.20	H INLET	911.63	908.23	3.40	W/3067-7004-V
S-12D	303+01.41	RT-16.22	H INLET	911.68	908.28	3.40	W/3067-7004-V
<b>GREGORY ST</b>							
T-3	113+84.73	RT-13.93	TAP	-	-	-	EX AS 4157-028
* S-13	113+82.37'	LT-13.50	H INLET	892.56	887.30	5.26	W/3920-A
S-14	110+82.06	RT-11.70	COLLAR	-	902.17	-	
* S-15	110+76.82	LT-13.50	H INLET	905.57	902.71	2.86	FP; W/3290-A (3)
* S-16	110+52.47	LT-13.50	H INLET	906.31	902.93	3.38	W/3920-A
S-17	100+06.38	RT-13.50	H INLET	927.14	924.44	2.70	FP; W/3067-7004-V (3)
S-18	100+45.96	RT-13.50	H INLET	927.46	924.68	2.78	FP; W/3067-7009-V (2)(3)
S-19	100+66.42	RT-13.50	H INLET	927.59	924.84	2.75	FP; W/3067-7004-V (3)

## PROPOSED STORM PIPES

PIPE NO.	FROM (DNSTM)	TO (UPSTM)	DISCH. E.I.	INLET E.I.	PLAN (PAY) LGTH (FT)	PIPE LGTH (FT)	SLOPE (%)	PIPE SIZE	TYPE	NOTES
<b>COPELAND ST</b>										
P-1	T-1	S-1	898.42	898.77	23	21	1.67%	12"	RCP	
P-2	S-1	S-2	898.87	899.13	37	35	0.74%	12"	RCP	
P-3	S-2	S-3	899.23	899.34	19	16	0.69%	12"	RCP	
P-4	T-2	S-4	902.03	902.39	23	21	1.71%	12"	RCP	
<b>WESTERN AVE</b>										
P-5	T-4	S-5	867.40	867.81	31	30	1.37%	15"	RCP	
P-6	S-5	S-6	867.91	868.53	88	80	0.78%	15"	RCP	
P-7	S-6	S-7	871.03	873.03	49	42	4.76%	15"	RCP	
P-7A	S-7	S-7A	879.12	879.16	6	3	1.33%	12"	RCP	
P-7B	S-7	S-7B	878.97	879.16	26	23	0.83%	12"	RCP	
P-8	S-7	S-8	878.24	887.02	88	85	10.33%	15"	RCP	
P-8A	S-8	S-8A	890.77	891.19	5	2	21.00%	12"	RCP	
P-8B	S-8	S-8B	890.77	891.17	25	22	1.82%	12"	RCP	
P-9	S-8	S-9	890.52	899.42	81	79	11.27%	15"	RCP	
P-10	S-9	S-10	899.52	903.45	84	82	4.79%	15"	RCP	
P-10A	S-10	S-10A	903.70	904.14	6	4	11.00%	12"	RCP	
P-11	S-10	S-11	903.55	906.64	103	100	3.09%	15"	RCP	
P-11A	S-11	S-11A	906.89	907.57	7	4	17.00%	12"	RCP	
P-11B	S-11	S-11B	906.89	907.57	25	22	3.09%	12"	RCP	
P-12	S-11	S-12	906.74	907.23	37	34	1.44%	15"	RCP	
P-12A	S-12	S-12A	907.48	907.71	25	22	1.05%	12"	RCP	
P-12B	S-12A	S-12B	907.48	907.99	19	16	3.19%	12"	RCP	
P-12C	S-12	S-12C	907.48	908.23	17	14	5.36%	12"	RCP	
P-12D	S-12	S-12D	907.48	908.28	30	26	3.08%	12"	RCP	
* P-18	S-5	STA 308+00.71, LT-31.72'	868.39	869.49	55	55	2.00%	8"	TYPE III STM (4)	
* P-19	S-10A	STA 304+55.18, LT-33.92'	904.47	904.73	13	13	2.00%	8"	TYPE III STM (4)	
<b>GREGORY ST</b>										
P-13	T-3	S-13	886.36	887.30	28	26	3.62%	12"	RCP	
P-14	S-14	S-15	902.17	902.71	26	24	2.25%	12"	RCP	
P-15	S-15	S-16	902.81	902.93	23	22	0.55%	12"	RCP	
P-16	S-17	S-18	924.44	924.68	40	38	0.63%	12"	RCP	
P-17	S-18	S-19	924.73	924.84	21	18	0.61%	12"	RCP	

### NOTE:

- PLAN LENGTH (PAY LENGTH) IS FROM CENTER OF STRUCTURE TO CENTER OF STRUCTURE. PIPE LENGTH IS ACTUAL LENGTH OF PIPE FROM STRUCTURE WALL TO STRUCTURE WALL. SLOPE CALCULATED USING PIPE LENGTH.
- KOR N SEAL BOOTS OR EQUIVALENT SHALL BE USED FOR ALL PIPE CONNECTIONS TO INLETS. IN ADDITION, KOR N SEAL BOOTS SHALL BE REQUIRED FOR ANY TYPE II PIPE CONNECTION TO SAS STORM STRUCTURES. CONCRETE COLLARS OR KOR N SEAL MAY BE USED FOR ANY RCP OR HERCP
- ALL REBAR FOR FIELD POURED STRUCTURES SHALL BE EPOXY COATED. ANY EXPOSED STEEL SHALL BE TOUCHED UP OR RECOATED PRIOR TO USE.
- ALL FIELD POURED SAS STORM STRUCTURES SHALL BE CONSTRUCTED IN ACCORDANCE WITH STANDARD DETAIL DRAWING 5.7.3. ALL PRECAST SAS STORM STRUCTURES SHALL BE CONSTRUCTED IN ACCORDANCE WITH STANDARD DETAIL DRAWING 5.7.5.

### STANDARD NOTES:

- ABBREVIATIONS: AE = APRON ENDWALL; RCP = REINFORCED CONCRETE PIPE; HERCP = HORIZONTAL ELLIPTICAL REINFORCED CONCRETE PIPE; DNA = DOES NOT APPLY; SAS = SEWER ACCESS STRUCTURE; LP = LOW POINT INLET STRUCTURE; FP = FIELD POURED STRUCTURE; TR = TOP OF CONCRETE ROOF; NCM = NO CROWN MATCH FOR PIPES; UD = UNDERDRAIN

- APPROXIMATE DISCHARGE E.I. GIVEN, ADJUST E.I. AND PIPE SLOPE IN THE FIELD.

- TOP OF CASTING GRADE GIVEN IS THE TOP OF CURB FOR INLET STRUCTURES AND THE FLOWLINE OF THE CLOSED CASTING FOR SAS's.

- TOP OF CONCRETE ROOF (TR) IS 1.25' BELOW TOP OF CASTING UNLESS OTHERWISE NOTED.

- ALL REINFORCED CONCRETE PIPES TO BE CLASS III UNLESS OTHERWISE NOTED.

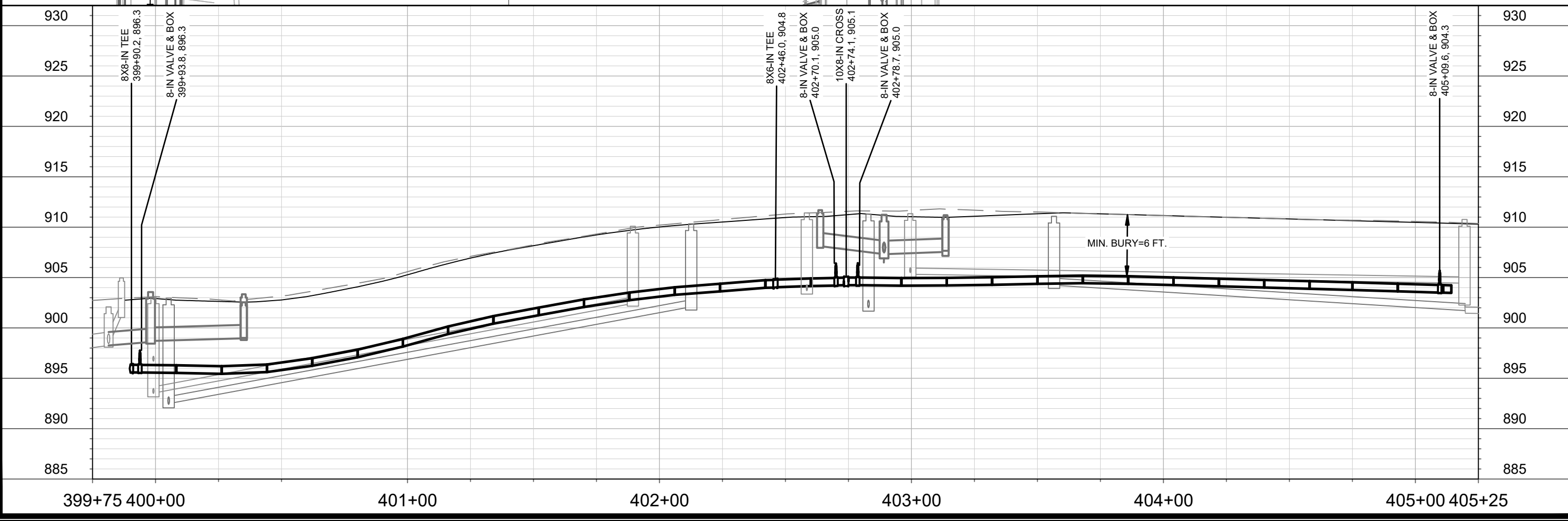
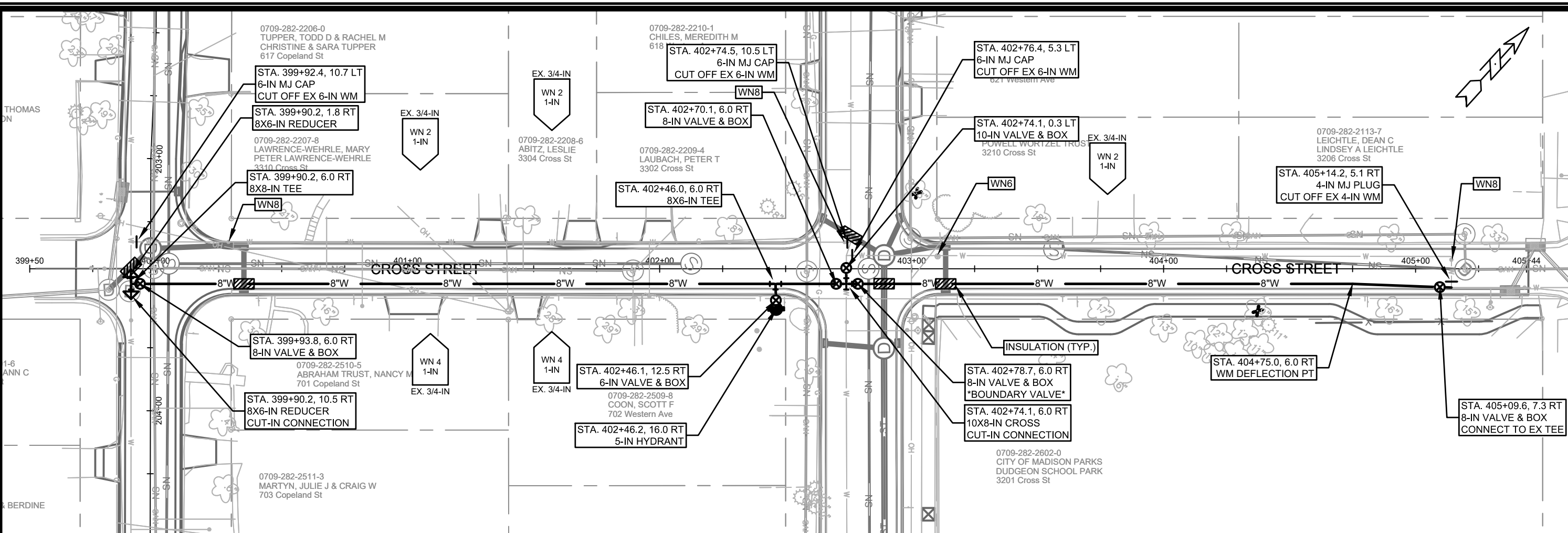
- SURVEYOR TO CONFIRM THAT ALL INLET STATION / OFFSETS LINE UP WITH PROPOSED CURB AND GUTTER.

- ALL STRUCTURES CALLED OUT AS FIELD POURED SHALL BE FIELD POURED. ALL OTHER STRUCTURES (NOT INDICATED AS FIELD POURED) SHALL BE SUBMITTED TO CITY ENGINEERING FOR APPROVAL IF PRECAST STRUCTURES ARE PREFERRED. CONTACT DANIEL OLIVARES OF CITY ENGINEERING AT (608) 261-9285 FOR PRECAST APPROVALS, FAX SHOP DRAWINGS TO (608)264-9275, OR EMAIL SHOP DRAWINGS TO DAOLIVARES@CITYOFMADISON.COM.

### SPECIFIC NOTES

- (1) FIELD POUR STRUCTURE. SEE S.D.D. 5.7.39C & 5.7.39D
- (2) INSTALL MOUNTABLE CURB PLATE W/ COMBINATION INLET FRAME
- (3) PIPE INVERT GIVEN; ADD 1' BELOW LOWEST INVERT, SEE S.D.D. 5.7.3
- \* (4) PROVIDE CAP & PLACE ELEC MARKER BALL





11188	MADISON, WI	CONTRACT NO: 8501	W-1
<b>WATER PLAN AND PROFILE - CROSS STREET</b> <b>GREGORY ST, CROSS ST, COPELAND ST, &amp; WESTERN AVE RECON.</b> CITY OF MADISON, WI			
	11188	W-1	